

# K

## KINGSTON

### C·R·O·S·S·I·N·G

#### APARTMENT HOMES



#### Features:

- ◆ Faux Wood Flooring
- ◆ Carpet in Bedrooms
- ◆ Walk-In Closets
- ◆ Garden Bath Tubs
- ◆ Stainless Steel Appliances
- ◆ Granite Countertops
- ◆ Rich Wood Finished Cabinets
- ◆ Garages on All Units
- ◆ Corporate Units
- ◆ Pets Welcome
- ◆ Full Size Washer and Dryer Connections
- ◆ Open Floor Plans
- ◆ Onsite Maintenance

#### Outdoor Amenities:

- ◆ Gated Community
- ◆ Sparkling Pool and Hot Tub
- ◆ Sail Shades
- ◆ Covered Grill and Sitting Area
- ◆ Bike Rack
- ◆ Car Care Center
- ◆ Playground

- ◆ Bark Park
- ◆ Valet Trash Removal  
5 Days a Week

#### Indoor Amenities:

- ◆ Clubhouse
- ◆ Gameroom
- ◆ Tanning Bed
- ◆ State of the Art Fitness Center



**Call 318-290-3988**  
**For More Information.**

90 Kingston Crossing • Bossier City, LA 71111  
[kingstoncrossing@heritageproperties.com](mailto:kingstoncrossing@heritageproperties.com)



# KINGSTON CROSSING APARTMENT HOMES

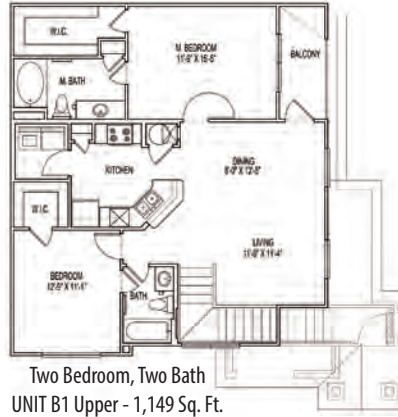
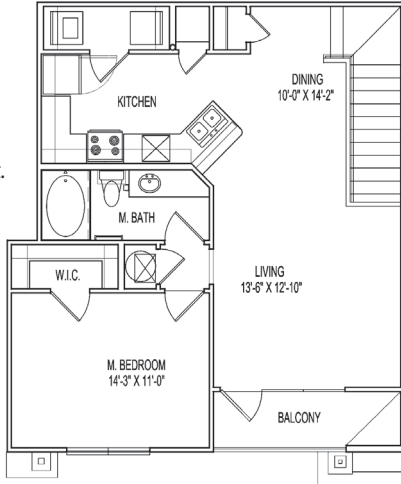
## Floor Plans:

We are offering one, two and three bedroom apartment homes with a variety of unique floor plans.

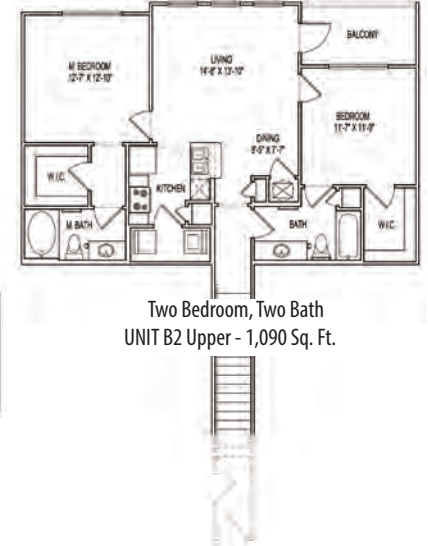
## Directions:

From Interstate 220, exit Airline Drive North. Drive approximately 5 miles north and turn left on Kingston Road. Property will be directly on the left.

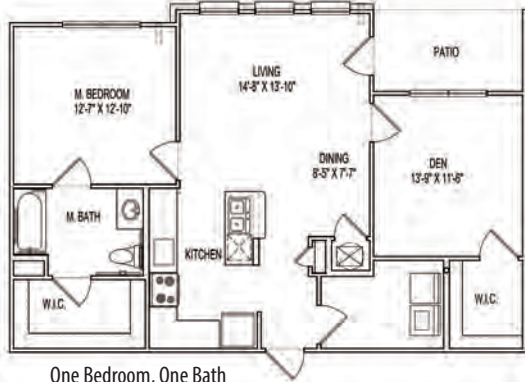
One Bedroom, One Bath  
UNIT A1 Upper - 863 Sq. Ft.



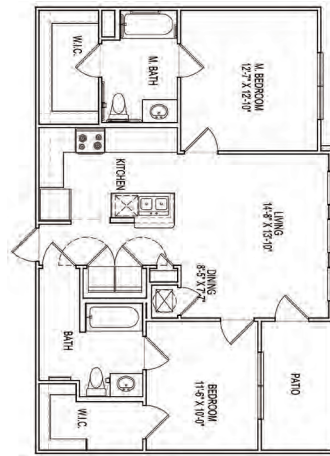
Two Bedroom, Two Bath  
UNIT B1 Upper - 1,149 Sq. Ft.



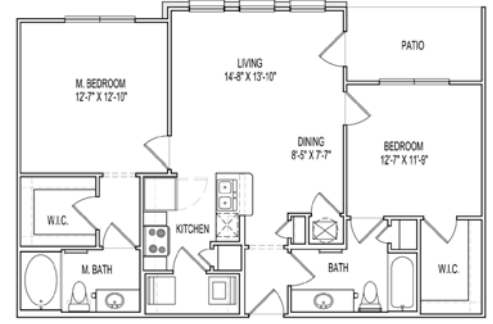
Two Bedroom, Two Bath  
UNIT B2 Upper - 1,090 Sq. Ft.



One Bedroom, One Bath  
UNIT A2 ANSI - 972 Sq. Ft.

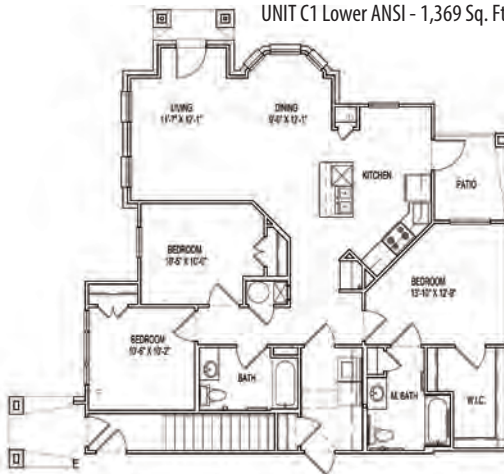


Two Bedroom, Two Bath  
UNIT B2 Lower ANSI - 972 Sq. Ft.

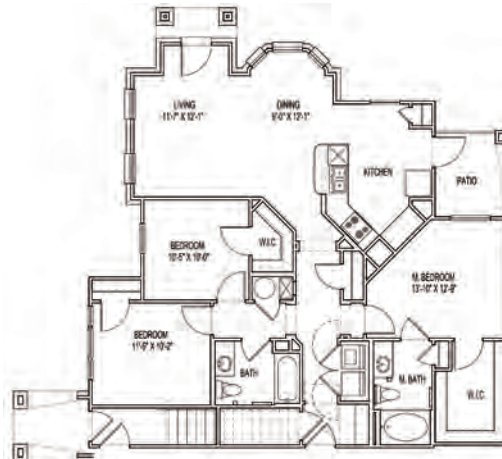


Two Bedroom, Two Bath  
UNIT B2 Lower - 972 Sq. Ft.

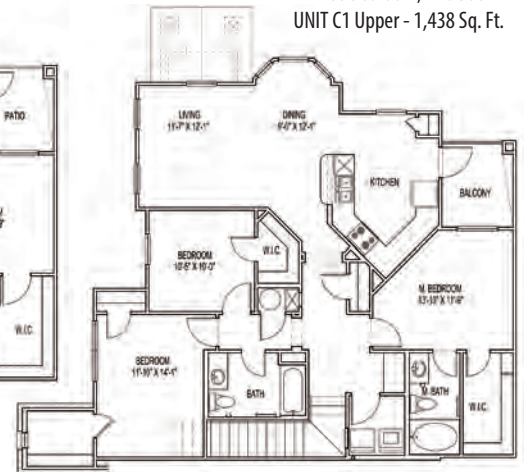
Three Bedroom, Two Bath  
UNIT C1 Lower ANSI - 1,369 Sq. Ft.



Three Bedroom, Two Bath  
UNIT C1 Lower - 1,369 Sq. Ft.



Three Bedroom, Two Bath  
UNIT C1 Upper - 1,438 Sq. Ft.



**EQUAL HOUSING:** We are pledged to the letter and spirit of U.S. policy for the achievement of equal housing opportunity throughout the Nation. We encourage and support an affirmative advertising and marketing program in which there are no barriers to obtaining housing because of race, color, religion, sex, handicap, familial status, or national origin.

**MARKETING DISCLAIMER:** Need Not Be Built. For Marketing Purposes Only. All renderings, floor plans, features and photography are artist's direction only. Special offers are subject to change without notification. All move in discounts and specials are not for existing residents. Features, pricing and dimensions shown herein are subject to change without notice. All dimensions are approximate. Developer reserves the right to modify or adjust prices and/or specifications without notice.